

Eleven

TwentyEleven

Collection

Modern>Chairs

IL PRODOTTO
THE PRODUCT



1205[®]

1205®



1205®						faggio		
								
80	53	49	47	2	0,30			

1205/P®



1205/P®						faggio		
								
80	56	60	47	65	1	0,33		

1205/PSL®



1205/PSL®						faggio		
								
80	56	60	47	65	1	0,33		

1205/P[®]

1205/PSL[®]

1205[®]



1205/PSL[®]

1205/P[®]



1210/P®



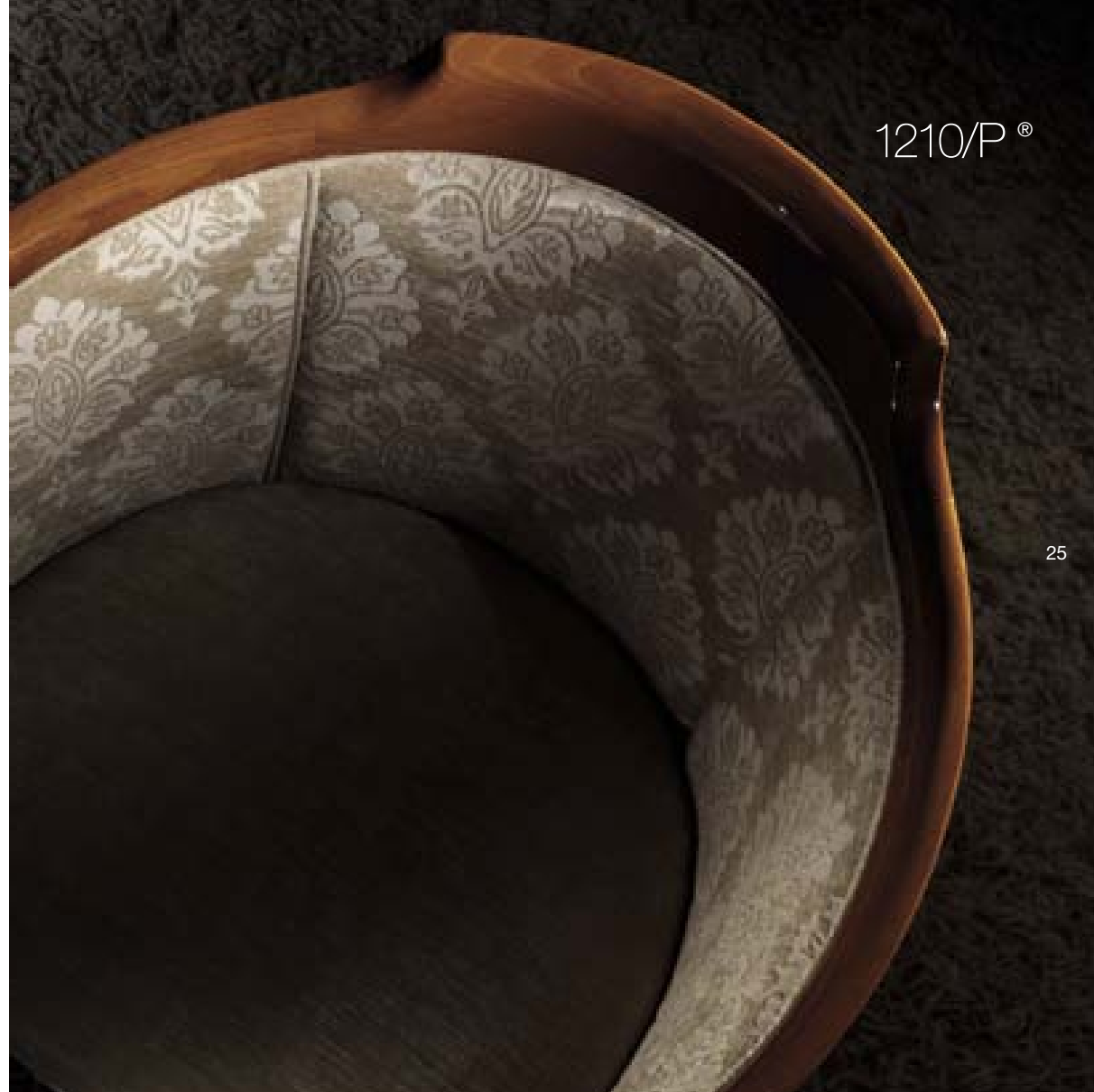
24

1210/P®

faggio

h	h	A	h	h	BOX	m ³
75	57	65	47	65	1	0,33

1210/P®



25

1210/P[®]

26



27

1215/P®

28



1215/P®

29



1215/P® faggio

h	h	A	h	A	BDX	m ³
75	57	56	47	65	1	0,29

1215/P[®]



30



31

1220®



32

1220®						faggio	
H	H	A	H	BOX	m ³		
83	58	53	47	2	0,37		

1220/P®



1220/P®							faggio	
H	H	A	H	H	BOX	m ³		
83	63	66	47	65	1	0,35		

1220/P®



33

1220[®]



1220/P[®]



1225/P[®]

36



1225/P[®]



37

1225/P[®] faggio

h	h	A	h	h	BOX	m ³
81	62	60	47	65	1	0,33

1225/P[®]



1230/P®



40

1230/P® faggio

h	h	A	h	h	BOX	m ³
76	57	69	47	70	1	0,33

1230/P®



41

1230/P[®]



1235/P[®]

1235/PSL[®]



1235/P®



46

1235/P® faggio
h h A h h BOX m³
80 58 60 47 67 1 0,33

1235/PSL®



1235/PSL® faggio
h h A h h BOX m³
80 58 60 47 67 1 0,33

1235/P®



47

1235/PSL[®]

1235/P[®]



1240/P®

50



1240/P®



1240/P®

faggio

h	h	A	h	h	BOX	m ³
77	60	65	47	68	1	0,35

1240/PSL®



51

1240/PSL®

faggio

h	h	A	h	h	BOX	m ³
77	60	65	47	68	1	0,35

1240/P®



52

1240/PSL®



53

1245[®]



54

1245 [®]	faggio					
h	h	A	h	BOX	m ³	
83	56	49	47	2	0,37	

1245/P[®]



1245/P [®]	faggio					
h	h	A	h	A	BOX	m ³
83	58	59	47	65	1	0,32

1245/P[®]



55

1245[®]



1245/P[®]



1250/P®

1250/P®

58



59

1250/P® faggio

h	h	A	h	h	BOX	m ³
93	76	73	47	67	1	0,54



1250/P®

105[®]



62

102[®]



102[®]

faggio

H H A H BOX m³ i
97 53 45 46 2 0,32

105[®]



63

105[®]

faggio

H H A H BOX m³ i
97 53 45 46 2 0,32

100/P[®]



100®



66

100®						faggio
h	h	A	h	BOX	m ³	
97	53	45	46	2	0,32	

100/P®



100/P®						faggio
h	h	A	h	BOX	m ³	
97	53	56	46	67	1 0,30	

100/S®



67

100/S®						faggio
h	h	A	h	BOX	m ³	
107	52	44	77	1	0,27	



101/P[®]

101/S[®]

101[®]



101[®]



72

101 [®]	faggio / frassino					
h	h	A	h	BOX	m ³	
97	53	45	46	2	0,32	

101/P[®]



101/P [®]	faggio / frassino					
h	h	A	h	BOX	m ³	
97	53	56	46	67	1	0,30

101/S[®]



101/S [®]	faggio / frassino					
h	h	A	h	BOX	m ³	
107	52	44	77	1	0,27	

101[®]



73

104[®]



103[®]



103[®] faggio
H H A H BDX m³ i
97 53 45 46 2 0,32

104[®]



104[®] faggio
H H A H BDX m³ i
97 53 45 46 2 0,32



107[®]



107[®]



107[®]

faggio

h	h	A	h	BOX	m ³	i
97	53	45	46	2	0,32	



108[®]

80



108[®]



81

108[®] faggio
h h A h BOX m³ i
97 53 45 46 2 0,32

110[®]

82



109[®]



109[®]

faggio

H	H	A	H	BOX	m ³	i
97	53	45	46	2	0,32	

110[®]



83

110[®]

faggio

H	H	A	H	BOX	m ³	i
97	53	45	46	2	0,32	

112[®]

84



112[®]

116[®]



85

112[®] faggio
H H A H BOX m³ i
97 53 45 46 2 0,32

116[®] faggio
H H A H BOX m³ i
97 53 45 46 2 0,32

118®

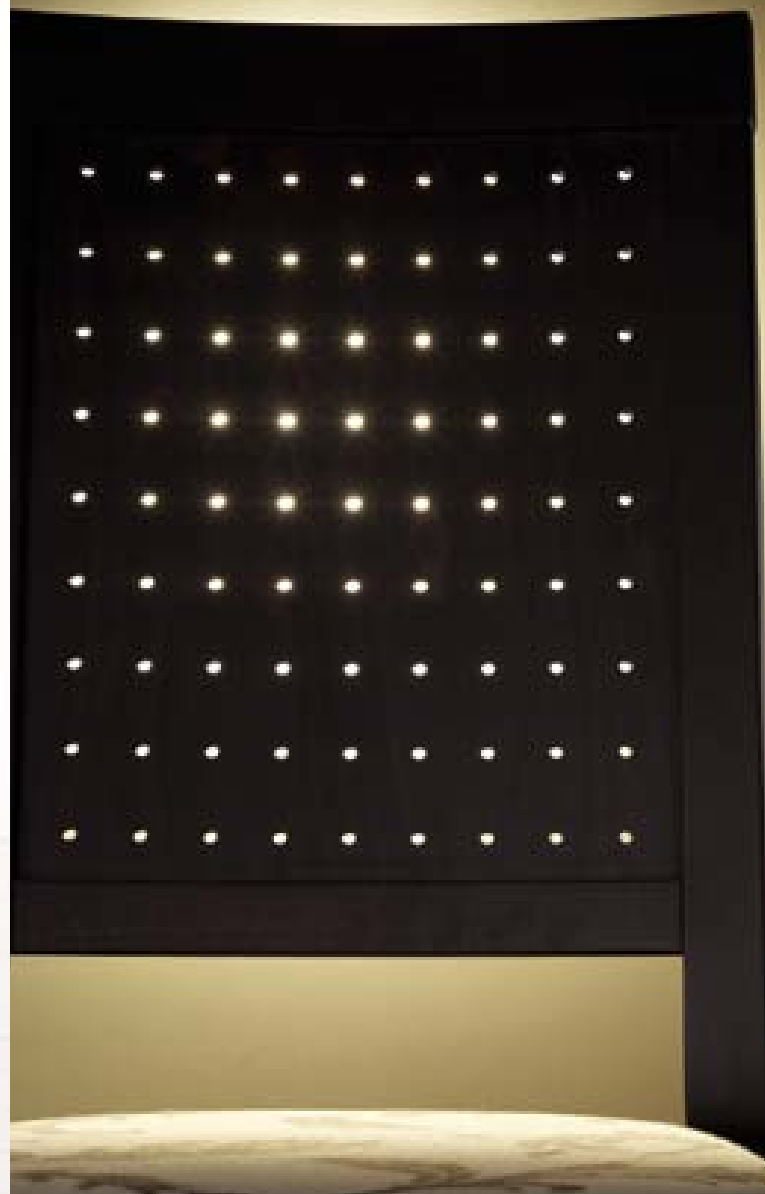


86

118® faggio

h	h	A	h	BOX	m ³	i
97	53	45	46	2	0,32	

118®



87

120[®]



120®



121®

120®



121®



120® faggio

H	H	A	H	BOX	m ³	i
97	53	45	46	2	0,32	

121® faggio / frassino

H	H	A	H	BOX	m ³	i
97	53	45	46	2	0,32	

122[®]



122[®]



123[®]



122[®]



94

122[®] faggio / frassino
H H A H BOX m³ i
103 53 45 46 2 0,34

123[®]



123[®] faggio / frassino
H H A H BOX m³ i
103 53 45 46 2 0,34

123[®]



95

135[®]

133[®]

130[®]

136[®]



96



135[®]

97

130[®]



98

133[®]



130[®] faggio

H	H	A	H	BOX	m ³
99	57	47	49	2	0,34

133[®] faggio

H	H	A	H	BOX	m ³
99	57	47	49	2	0,34

136[®]



136[®] faggio

H	H	A	H	BOX	m ³
99	57	47	49	2	0,34

135[®]



99

135[®] faggio

H	H	A	H	BOX	m ³
99	57	47	49	2	0,34

010®



010[®]



102

043[®]



051[®]



081[®]



103

010[®] faggio

h	h	A	h	BOX	m ³
97	49	45	49	2	0,30

043[®] faggio

h	h	A	h	BOX	m ³
97	49	45	49	2	0,30

051[®] faggio

h	h	A	h	BOX	m ³
97	49	45	49	2	0,30

081[®] faggio

h	h	A	h	BOX	m ³
97	49	45	49	2	0,30



152/I[®]

152/O[®]

152/T[®]



152/I[®]



152/O[®]



152/T[®]



152/T[®]



152/I[®]



108

109

152/I[®] faggio

h	h	A	h	BDX	m ³	
89	54	48	47	2	0,32	

152/O[®] faggio

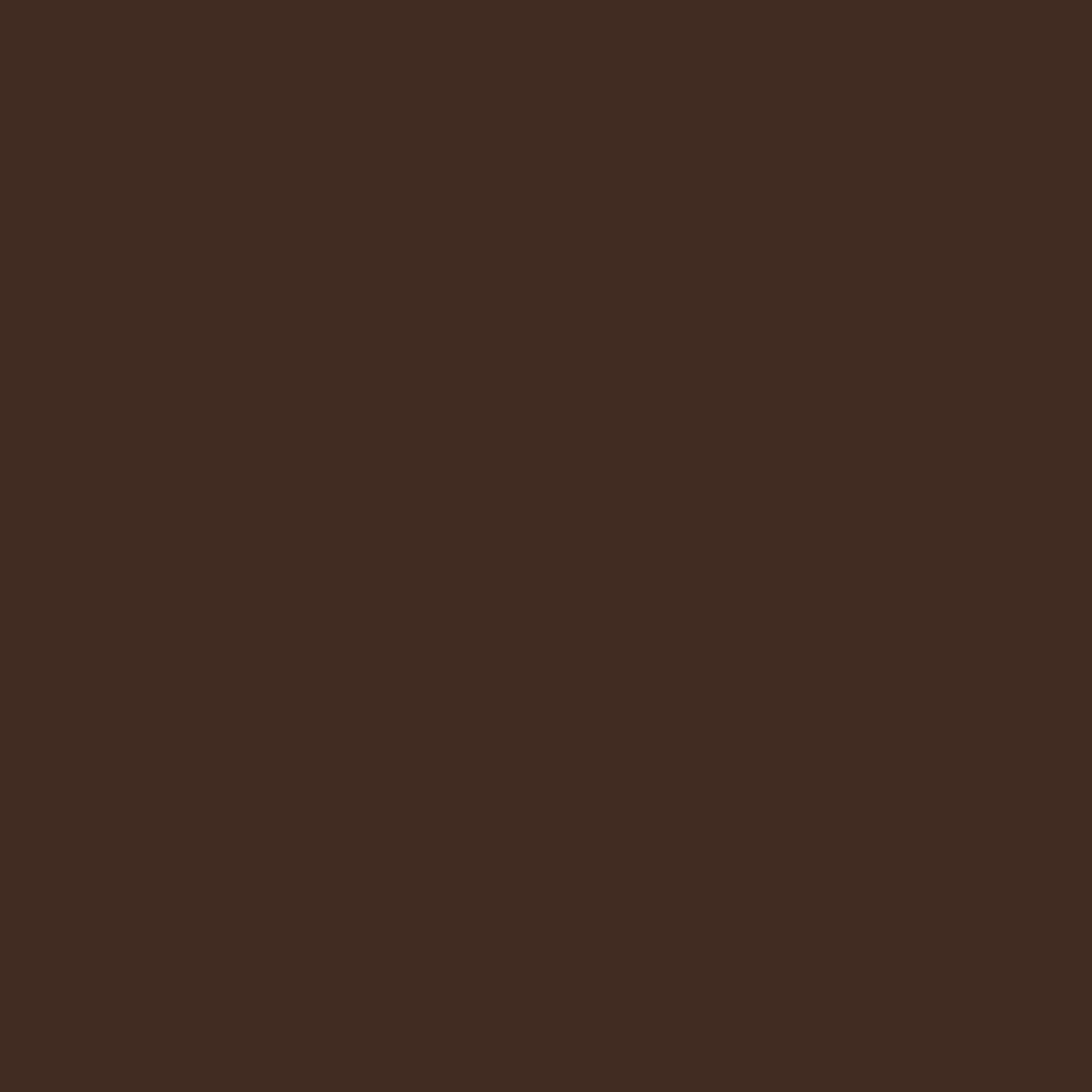
h	h	A	h	BDX	m ³	
89	54	48	47	2	0,32	

152/T[®] faggio

h	h	A	h	BDX	m ³	
89	54	48	47	2	0,32	

152[®]

110



152®



112

152® faggio / rovere /
noce canaletto

h	h	A	h	BOX	m ³	
89	54	48	47	2	0,32	

152®



113

152[®]

114



152[®]



115

152[®] faggio / rovere /
noce canaletto

h h A h BOX m³ 

89 54 48 47 2 0,32

152/C[®]



116

152/C[®] faggio

h	h	A	h	BOX	m ³	
89	54	48	47	2	0,32	

152/L[®]



152/L[®] faggio

h	h	A	h	BOX	m ³	
89	54	48	47	2	0,32	

152/C[®]

152/L[®]

152/F[®]



117

152/F®



118



152/F®

faggio

h	h	A	h	BOX	m ³	
89	54	48	47	2	0,32	

152/C®



152/F®



119

152/R®

120



152/R®



121

152/R®

faggio

h	h	A	h	BOX	m ³	
91	54	48	47	2	0,32	

152/R[®]



152/2[®]

152/1[®]

152/2[®]

152/3[®]



126

152/1[®] faggio

H	H	A	H	BDX	m ³	
81	54	48	47	2	0,32	

152/2[®] faggio

H	H	A	H	BDX	m ³	
81	54	48	47	2	0,32	

152/3[®] faggio

H	H	A	H	BDX	m ³	
81	54	48	47	2	0,32	



127

152/3[®]

152/1[®]

152/2[®]

128

129



1000/P®



1000®



132

1000®  faggio / rovere /
noce canaletto

H	H	A	H	BOX	m ³
80	48	48	46	2	0,26

1000/P®



1000/P®  faggio / rovere /
noce canaletto

H	H	A	H	A	BOX	m ³
79	56	56	46	66	1	0,28



133

1000/P®



1000/P[®]



136

1000/S[®]



1000[®]



1000/S[®]



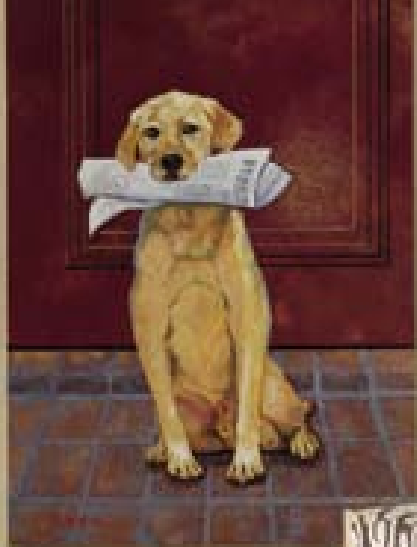
1000/S[®] faggio / rovere /
noce canaletto

h h A h BOX m³
106 44 44 76 1 0,23



137

1000/S[®]



140[®]

140

140[®]



140[®]

faggio



142[®]



141

142[®]

faggio





142

143[®]



141[®]



143




141[®]



141[®] faggio
 H H A H BOX m³
 84 53 46 47 2 0,28

143[®]



143[®] faggio
 H H A H BOX m³ 
 84 53 46 47 2 0,28

146[®]



146

146[®] faggio / frassino imp. rovere 

h	h	A	h	BOX	m ³
86	49	43	46	2	0,28

155[®]



155[®] faggio / frassino

h	h	A	h	BOX	m ³
83	48	43	46	2	0,26

400[®]



400[®] faggio 

h	h	A	h	BOX	m ³
82	47	47	47	2	0,28

146[®]



155[®]



147

150/P[®]

148



149

150®



150

150® faggio / rovere
H H A H BOX m³
89 52 46 47 2 0,32

150/P®



150/P® faggio / rovere
H H A H A BOX m³
89 52 57 47 65 2 0,32




151

160®



152

160®  faggio

h	h	A	h	BOX	m ³
98	56	45	51	2	0,39

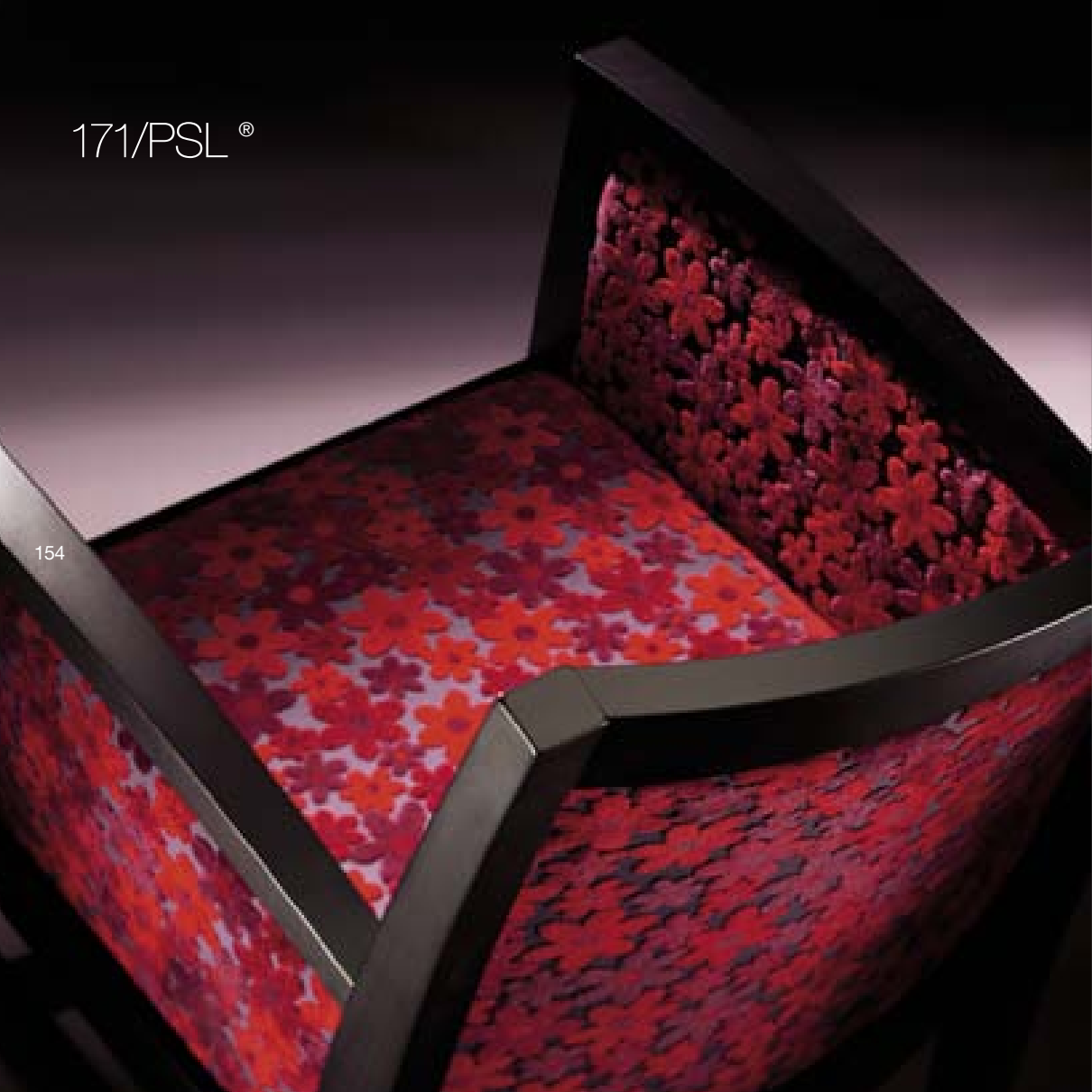
160®



153

171/PSL®

154



171/PSL®



155

171/PSL® faggio

h	h	A	h	A	BOX	m ³
87	57	50	50	67	1	0,27

172®



156

172® faggio

h	h	A	h	BOX	m ³
87	57	50	50	2	0,39

172/P®



172/P® faggio

h	h	A	h	A	BOX	m ³
87	57	50	50	67	1	0,27

174/P®



174/P® faggio

h	h	A	h	A	BOX	m ³
87	57	50	50	67	1	0,27

174®



174® faggio

h	h	A	h	BOX	m ³
87	57	50	50	2	0,39

157

174[®]



174/P[®]



180/S[®]

180/P[®]

180[®]

160

161



180®



162

180® faggio

H	H	A	H	BOX	m ³
85	54	48	47	2	0,33

180/P®



180/P® faggio

H	H	A	H	A	BOX	m ³
85	56	63	47	67	1	0,31





180/S[®]

180/IM[®]

180/PIM[®]

166

167



180/IM®



168

180/IM® faggio
H H A H BOX m³
85 57 53 47 2 0,34

180/PIM®



180/PIM® faggio
H H A H H BOX m³
85 57 61 47 67 2 0,40



169



170

180/POUF®



180/POUF® faggio

			BOX	m³	
54	54	40	2	0,25	

180/S®



180/S® faggio

				BOX	m³
107	53	46	76	1	0,27

171

1180[®]



173

2180®



174

2180® faggio

h	h	A	h	h	BOX	m ³
85	73	130	47	67	1	0,83

1180®



175

1180® faggio

h	h	A	h	h	BOX	m ³
85	73	70	47	67	1	0,45

2180[®]



180/Pouf[®]

1180[®]



181[®]



181[®]



181[®]

faggio

H	H	A	H	BOX	m ³	
85	54	48	47	2	0,33	

181/P[®]



181/P[®]

faggio

H	H	A	H	A	BOX	m ³	
85	56	63	47	67	1	0,31	

182[®]

185[®]

197[®]

180



182[®]



faggio

H H A H BOX m³

85 54 48 47 2 0,33



185[®]



faggio

H H A H BOX m³

85 54 48 47 2 0,33

197[®]



faggio

H H A H BOX m³

85 54 48 47 2 0,33

197[®]

181





1122/P®

1122®

1122/P®



184

1122/P® faggio / frassino

h	h	A	h	h	BOX	m ³
88	56	58	47	65	1	0,34

1122®



1122® faggio / frassino

h	h	A	h	BOX	m ³
88	56	47	47	2	0,35

1122/S®



185

1122/S® faggio / frassino

h	h	A	h	BOX	m ³
105	52	46	76	1	0,29



1122/P[®]

1122[®]

147[®]

148[®]



188

147[®]

148[®]



189

147[®]

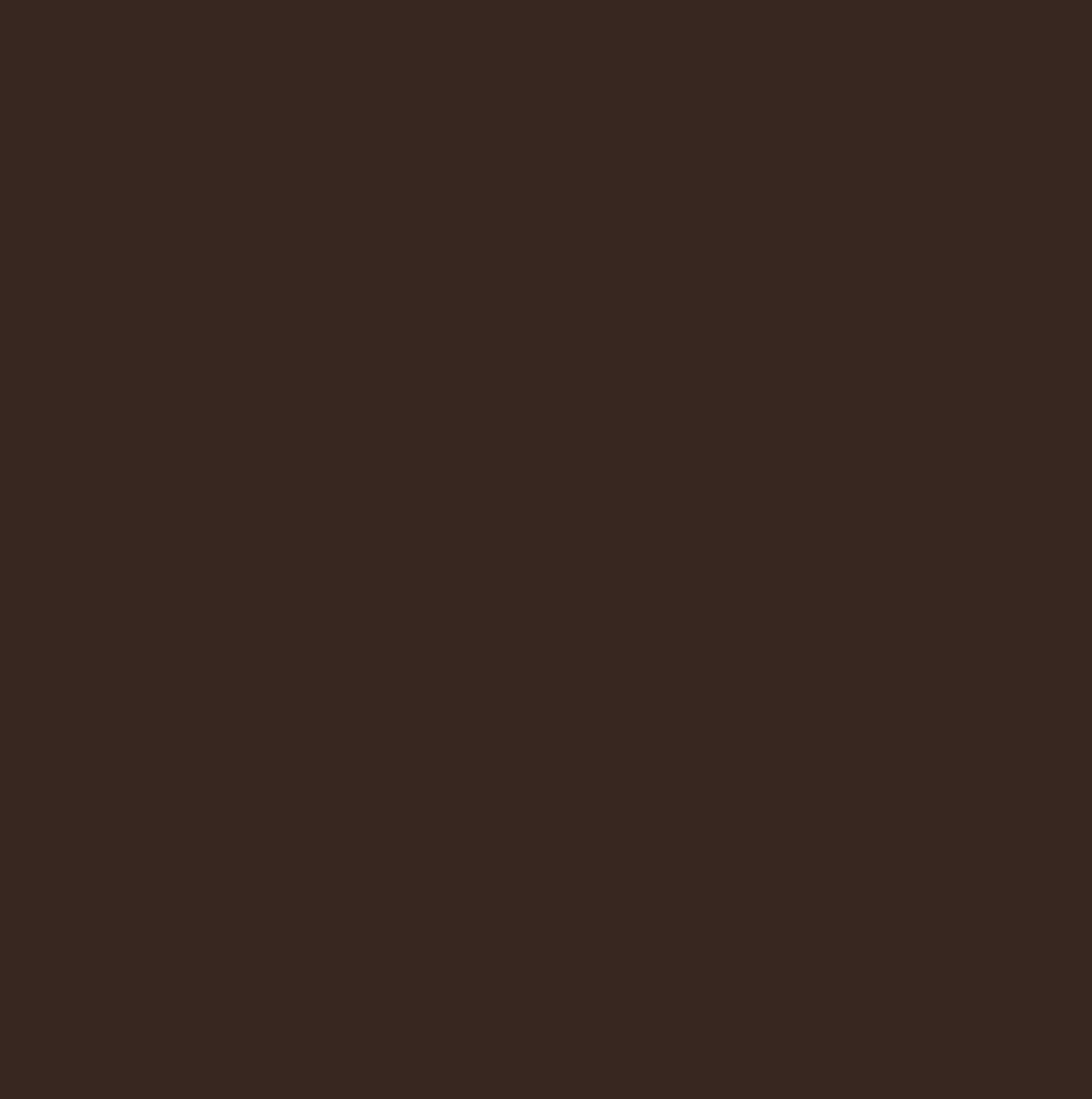
faggio / frassino

h	h	A	h	BOX	m ³
81	50	42	46	2	0,28

148[®]

faggio / frassino

h	h	A	h	BOX	m ³
81	45	43	47	2	0,25



404[®]

191

404[®]



389[®]



384[®]



192

404[®]  faggio

H	H	A	H	BOX	m ³
86	48	42	46	2	0,26

389[®]  faggio

H	H	A	H	BOX	m ³
86	46	42	46	2	0,25

384[®]  faggio

H	H	A	H	BOX	m ³
88	48	42	46	2	0,26

384[®]



389[®]



404[®]



193



153[®]

153[®]



196

153[®] faggio / frassino

H	H	A	H	BOX	m ³
82	57	43	47	2	0,31

153/S[®]



153/S[®] faggio / frassino

H	H	A	H	BOX	m ³
109	54	45	76	1	0,30



153/S[®]

197

153[®]

153/S[®]



156/B®



200

156/B® faggio / frassino

h	h	A	h	BOX	m ³
82	56	48	47	2	0,33

156®



156® faggio / frassino

h	h	A	h	BOX	m ³
82	56	48	47	2	0,33

156®



156/B®



201

156[®]



202

203

156/B[®]



204

205



157[®]

207

157[®]



208

157/S[®]



157[®] faggio / frassino

h	h	A	h	BOX	m ³
82	51	49	47	2	0,31

157/S[®] faggio / frassino

h	h	A	h	BOX	m ³
108	49	47	76	1	0,28

157/B[®]



157/B[®] faggio / frassino

h	h	A	h	BOX	m ³
82	51	49	47	2	0,31

157/BS[®]



157/BS[®] faggio / frassino

h	h	A	h	BOX	m ³
108	49	47	76	1	0,28

209

- 157/S®





158[®]

213

158[®]



214

158/S[®]



158[®] faggio / frassino

h	h	A	h	BOX	m ³
82	54	49	47	2	0,33

158/S[®] faggio / frassino

h	h	A	h	BOX	m ³
109	51	46	76	1	0,28

158/B[®]



158/B[®] faggio / frassino

h	h	A	h	BOX	m ³
82	54	49	47	2	0,33

158/BS[®]



158/BS[®] faggio / frassino

h	h	A	h	BOX	m ³
109	51	46	76	1	0,28

215

158[®]

158/S[®]

216

217





1570 B11F®

1570 B11F®
1570 B12G®



220

1570 B13G/GR®



1570 B01G/GR®



221

1570®

h h A h BOX m³
81 59 66 47 1 0,40

F = base fissa | **G** = base girevole
F = fix base | **G** = swivel base

F = base fissa | **G** = base girevole | **GR** = base con sistema di ritorno
F = fix base | **G** = swivel base | **GR** = swivel base with self-returning mechanism

1570 B23F[®]



222

1570 B23F[®]



1570 B92F[®]



223

1570[®]

h	h	A	h	BOX	m ³
81	59	66	47	1	0,40

1570 B21F[®]



224



1570 B22F[®]



1570 B81F[®]



225

1570[®]

h	h	A	h	BOX	m ³
81	59	66	47	1	0,40

1570[®]

h	h	A	h	BOX	m ³
81	59	66	47	1	0,40

226



1580 B91F[®]



227

1580[®]

h	h	A	h	BOX	m ³
86	56	58	47	1	0,36



1580 B14G[®]

228

1580 B11F[®]
1580 B12G[®]



229

F = base fissa | **G** = base girevole | **GR** = base con sistema di ritorno
F = fix base | **G** = swivel base | **GR** = swivel base with self-returning mechanism

1580 B13G[®]

230



1580 B01G/GR[®]

1580 B14G[®]



231

1580[®]

H	H	A	H	BOX	m ³
86	56	58	47	1	0,36

G = base girevole

G = swivel base

GR = base con sistema di ritorno

GR = swivel base with self-returning mechanism



1560[®]

1560 B01G/GR®



234

1560 B11F®
1560 B12G®



1560 B13G/GR®



235

1560®

H	H	A	H	BOX	m ³
82	60	66	47	1	0,40

G = base girevole | **GR** = base con sistema di ritorno
G = swivel base | **GR** = swivel base with self-returning mechanism

G = base girevole | **GR** = base con sistema di ritorno
G = swivel base | **GR** = swivel base with self-returning mechanism

1560 B02G/GR®

1560 B21F®



236

1560®

H H A H BOX m³
82 60 65 47 1 0,40

F = base fissa
F = fix base

G = base girevole
G = swivel base

GR = base con sistema di ritorno
GR = swivel base with self-returning mechanism

1560 B21F®



237

1560 B81F[®]



1560 B23F[®]



1560 B92F[®]



1560 B22F[®]



238

239

1560[®]

h	h	A	h	BOX	m ³
82	60	66	47	1	0,40

1560[®]

h	h	A	h	BOX	m ³
82	60	66	47	1	0,40



1550 B02G/GR®

1550 B02G/GR®

1551 B02G/GR®

1550 B13G/GR®

1551 B13G/GR®



242

243

1550®

H	H	A	H	BOX	m ³
88	68	90	45	1	0,67

G = base girevole

GR = base con sistema di ritorno

G = swivel base

GR = swivel base with self-returning mechanism

1551®

H	H	A	H	BOX	m ³
99	70	90	45	1	0,74

G = base girevole

GR = base con sistema di ritorno

G = swivel base

GR = swivel base with self-returning mechanism

1551 B01G/GR®

1550 B01G/GR®

244



G = base girevole | **GR** = base con sistema di ritorno
G = swivel base | **GR** = swivel base with self-returning mechanism

1551®
H H A H BOX m³
99 70 90 45 1 0,74

1550®
H H A H BOX m³
87 68 90 45 1 0,67

1551 B01G/GR®



243

1540[®]

247



1540 B11F®
1540 B12G®



248

1540 B13G/GR®



1540®

h h A h BOX m³
82 59 65 47 1 0,40

F = base fissa
F = fix base

G = base girevole
G = swivel base

GR = base con sistema di ritorno
GR = swivel base with self-returning mechanism

1540 B51F®



249

1540®

h h A h BOX m³
82 59 65 47 1 0,40

F = base fissa
F = fix base

1540 B13G/GR®

250



1540 B01G/GR®

1540 B92F®

1540 B14G®



251

1540®

H H A H BOX m³
82 59 65 47 1 0,40

F = base fissa

F = fix base

G = base girevole

G = swivel base

GR = base con sistema di ritorno

GR = swivel base with self-returning mechanism

1510 B11F[®]



1510[®]

h	h	A	h	BOX	m ³
78	66	71	47	1	0,39

F = base fissa

F = fix base

1510 B13G/GR[®]





1510 B02G/GR®

254

1510 B12G®



1510 B13G/GR®



255

1510®

h	h	A	h	BOX	m ³
78	66	71	47	1	0,39

G = base girevole

G = swivel base

GR = base con sistema di ritorno

GR = swivel base with self-returning mechanism

1510 B02G/GR®

1510 B01G/GR®



256

257

1510®

h h A h BOX m³
78 66 71 47 1 0,39

G = base girevole

G = swivel base

GR = base con sistema di ritorno

GR = swivel base with self-returning mechanism

1520 B35G[®]



1520 B01G/GR®

1520 B02G/GR®

1520 B35G®

260



261



1520®

h	h	A	h	BOX	m ³
83	68	77	47	1	0,48

G = base girevole
G = swivel base

GR = base con sistema di ritorno
GR = swivel base with self-returning mechanism

1520®

h	h	A	h	BOX	m ³
83	68	77	47	1	0,48

G = base girevole
G = swivel base

2510 B33F®



262

2510 B33F®



263

2510®

h	h	A	h	BOX	m ³
83	68	143	47	1	0,90

1530[®]

264



1530 B08F[®]

1530 B01G/GR[®]



265

1530[®]

H H A H BOX m³
82 66 71 47 1 0,48

F = base fissa
F = fix base

G = base girevole
G = swivel base

GR = base con sistema di ritorno
GR = swivel base with self-returning mechanism

1520 B35G®

2510 B33F®

266

267



MISURE E FINITURE
SIZES AND FINISHINGS

010[®]

legno / faggio
wood / beech

peso / weight Kg 6,0
consumo stoffa cm* 50
fabric requirement cm* 50
imballo / box dim. H104 x L48 x P61

pag. 102

043[®]

legno / faggio
wood / beech

peso / weight Kg 6,0
consumo stoffa cm* 30
fabric requirement cm* 30
imballo / box dim. H104 x L48 x P61

pag. 102

101[®]

legno / faggio, frassino
wood / beech, ash

sedile stoffa / fabric seat Kg 6,5
sedile massello / wood seat Kg 6,9
consumo stoffa cm* 30
fabric requirement cm* 30
imballo / box dim. H100 x L47 x P67

pag. 72

101/P[®]

legno / faggio, frassino
wood / beech, ash

sedile stoffa / fabric seat Kg 7,8
sedile massello / wood seat Kg 8,2
consumo stoffa cm* 30
fabric requirement cm* 30
imballo / box dim. H99 x L58 x P55

pag. 72

051[®]

legno / faggio
wood / beech

peso / weight Kg 6,0
consumo stoffa cm* 40
fabric requirement cm* 40
imballo / box dim. H104 x L48 x P61

pag. 103

081[®]

legno / faggio
wood / beech

peso / weight Kg 6,0
consumo stoffa cm* 30
fabric requirement cm* 30
imballo / box dim. H104 x L48 x P61

pag. 103

102[®]

legno / faggio
wood / beech

peso / weight Kg 6,3
consumo stoffa cm* 40
fabric requirement cm* 40
imballo / box dim. H100 x L47 x P67

pag. 63

102/P[®] 

legno / faggio
wood / beech

sedile stoffa / fabric seat Kg 7,8
sedile massello / wood seat Kg 8,0
consumo stoffa cm* 40
fabric requirement cm* 40
imballo / box dim. H99 x L58 x P55

pag. 63

270

100[®]

legno / faggio
wood / beech

peso / weight Kg 6,3
consumo stoffa cm* 50
fabric requirement cm* 50
imballo / box dim. H100 x L47 x P67

pag. 66

100/P[®]

legno / faggio
wood / beech

peso / weight Kg 7,6
consumo stoffa cm* 50
fabric requirement cm* 50
imballo / box dim. H99 x L58 x P55

pag. 66

103[®]

legno / faggio
wood / beech

sedile stoffa / fabric seat Kg 6,3
sedile massello / wood seat Kg 6,7
consumo stoffa cm* 30
fabric requirement cm* 30
imballo / box dim. H100 x L47 x P67

pag. 75

103/P[®] 

legno / faggio
wood / beech

sedile stoffa / fabric seat Kg 7,8
sedile massello / wood seat Kg 8,0
consumo stoffa cm* 30
fabric requirement cm* 30
imballo / box dim. H99 x L58 x P55

pag. 75

100/S[®]

legno / faggio
wood / beech

peso / weight Kg 6,7
consumo stoffa cm* 45
fabric requirement cm* 45
imballo / box dim. H108 x L46 x P54

pag. 67

101/S[®]

legno / faggio, frassino
wood / beech, ash

sedile stoffa / fabric seat Kg 6,7
sedile massello / wood seat Kg 7,1
consumo stoffa cm* 27
fabric requirement cm* 27
imballo / box dim. H108 x L46 x P54

pag. 72

104[®]

legno / faggio
wood / beech

sedile stoffa / fabric seat Kg 6,3
sedile massello / wood seat Kg 6,7
consumo stoffa cm* 30
fabric requirement cm* 30
imballo / box dim. H100 x L47 x P67

pag. 75

104/P[®] 

legno / faggio
wood / beech

sedile stoffa / fabric seat Kg 7,8
sedile massello / wood seat Kg 8,0
consumo stoffa cm* 30
fabric requirement cm* 30
imballo / box dim. H99 x L58 x P55

pag. 75

271

105®



legno / faggio
wood / beech

peso / weight Kg 6,4
consumo stoffa cm* 59
fabric requirement cm* 59
imballo / box dim. H100 x L47 x P67

pag. 62

105/P® 

legno / faggio
wood / beech

sedile stoffa / fabric seat Kg 7,8
sedile massello / wood seat Kg 8,0
consumo stoffa cm* 59
fabric requirement cm* 59
imballo / box dim. H99 x L58 x P55

pag. 62

110®



legno / faggio
wood / beech

sedile stoffa / fabric seat Kg 6,3
sedile massello / wood seat Kg 6,7
consumo stoffa cm* 30
fabric requirement cm* 30
imballo / box dim. H100 x L47 x P67

pag. 83

110/P® 

legno / faggio
wood / beech

sedile stoffa / fabric seat Kg 7,8
sedile massello / wood seat Kg 8,0
consumo stoffa cm* 30
fabric requirement cm* 30
imballo / box dim. H99 x L58 x P55

pag. 83

107®



legno / faggio
wood / beech

sedile stoffa / fabric seat Kg 6,3
sedile massello / wood seat Kg 6,7
consumo stoffa cm* 30
fabric requirement cm* 30
imballo / box dim. H100 x L47 x P67

pag. 77

107/P® 

legno / faggio
wood / beech

sedile stoffa / fabric seat Kg 7,8
sedile massello / wood seat Kg 8,0
consumo stoffa cm* 30
fabric requirement cm* 30
imballo / box dim. H99 x L58 x P55

pag. 77

112®



legno / faggio
wood / beech

sedile stoffa / fabric seat Kg 6,3
sedile massello / wood seat Kg 6,7
consumo stoffa cm* 30
fabric requirement cm* 30
imballo / box dim. H100 x L47 x P67

pag. 85

112/P® 

legno / faggio
wood / beech

sedile stoffa / fabric seat Kg 7,8
sedile massello / wood seat Kg 8,0
consumo stoffa cm* 30
fabric requirement cm* 30
imballo / box dim. H99 x L58 x P55

pag. 85

272

108®



legno / faggio
wood / beech

sedile stoffa / fabric seat Kg 6,3
sedile massello / wood seat Kg 6,7
consumo stoffa cm* 30
fabric requirement cm* 30
imballo / box dim. H100 x L47 x P67

pag. 81

108/P® 

legno / faggio
wood / beech

sedile stoffa / fabric seat Kg 7,8
sedile massello / wood seat Kg 8,0
consumo stoffa cm* 30
fabric requirement cm* 30
imballo / box dim. H99 x L58 x P55

pag. 81

116®



legno / faggio
wood / beech

sedile stoffa / fabric seat Kg 6,3
sedile massello / wood seat Kg 6,7
consumo stoffa cm* 30
fabric requirement cm* 30
imballo / box dim. H100xL47xP67

pag. 85

116/P® 

legno / faggio
wood / beech

sedile stoffa / fabric seat Kg 7,8
sedile massello / wood seat Kg 8,0
consumo stoffa cm* 30
fabric requirement cm* 30
imballo / box dim. H99 x L58 x P55

pag. 85

273

109®



legno / faggio
wood / beech

sedile stoffa / fabric seat Kg 6,3
sedile massello / wood seat Kg 6,7
consumo stoffa cm* 30
fabric requirement cm* 30
imballo / box dim. H100 x L47 x P67

pag. 83

109/P® 

legno / faggio
wood / beech

sedile stoffa / fabric seat Kg 7,8
sedile massello / wood seat Kg 8,0
consumo stoffa cm* 30
fabric requirement cm* 30
imballo / box dim. H99 x L58 x P55

pag. 83

118®



legno / faggio
wood / beech

sedile stoffa / fabric seat Kg 6,3
sedile massello / wood seat Kg 6,7
consumo stoffa cm* 30
fabric requirement cm* 30
imballo / box dim. H100 x L47 x P67

pag. 86

118/P® 

legno / faggio
wood / beech

sedile stoffa / fabric seat Kg 7,8
sedile massello / wood seat Kg 8,0
consumo stoffa cm* 30
fabric requirement cm* 30
imballo / box dim. H99 x L58 x P55

pag. 86

120®



legno / faggio
wood / beech

sedile stoffa / fabric seat Kg 6,2
sedile massello / wood seat Kg 6,6
consumo stoffa cm* 30
fabric requirement cm* 30
imballo / box dim. H100 x L47 x P67

pag. 91

121®



legno / faggio, frassino
wood / beech, ash

peso / weight Kg 6,5
consumo stoffa cm* 65
fabric requirement cm* 65
imballo / box dim. H100 x L47 x P67

pag. 91

122®



legno / faggio, frassino
wood / beech, ash

peso / weight Kg 6,7
consumo stoffa cm* 65
fabric requirement cm* 65
imballo / box dim. H107 x L47 x P67

pag. 94

123®



legno / faggio, frassino
wood / beech, ash

sedile stoffa / fabric seat Kg 6,7
sedile massello / wood seat Kg 7,1
consumo stoffa cm* 30
fabric requirement cm* 30
imballo / box dim. H107 x L47 x P67

pag. 94

120/P® 

legno / faggio
wood / beech

sedile stoffa / fabric seat Kg 7,8
sedile massello / wood seat Kg 8,0
consumo stoffa cm* 30
fabric requirement cm* 30
imballo / box dim. H99 x L58 x P55

pag. 91

121/P® 

legno / faggio, frassino
wood / beech, ash

peso / weight Kg 7,8
consumo stoffa cm* 65
fabric requirement cm* 65
imballo / box dim. H99 x L58 x P55

pag. 91

122/P® 

legno / faggio, frassino
wood / beech, ash

peso / weight Kg 8,0
consumo stoffa cm* 65
fabric requirement cm* 65
imballo / box dim. H107 x L58 x P55

pag. 94

123/P® 

legno / faggio, frassino
wood / beech, ash

sedile stoffa / fabric seat Kg 8,0
sedile massello / wood seat Kg 8,4
consumo stoffa cm* 30
fabric requirement cm* 30
imballo / box dim. H107 x L58 x P55

pag. 94

130®



legno / faggio
wood / beech

peso / weight Kg 6,6
consumo stoffa cm* 58
fabric requirement cm* 58
imballo / box dim. H103 x L48 x P68

pag. 98

135®



legno / faggio
wood / beech

sedile stoffa / fabric seat Kg 6,5
sedile massello / wood seat Kg 6,9
consumo stoffa cm* 30
fabric requirement cm* 30
imballo / box dim. H103 x L48 x P68

pag. 99

140®



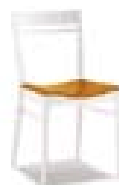
legno / faggio
wood / beech

peso / weight Kg 5,0
consumo stoffa cm* 30
fabric requirement cm* 30
imballo / box dim. H97 x L47 x P61

pag. 141



142®



legno / faggio
wood / beech

peso / weight Kg 5,0
consumo stoffa cm* 30
fabric requirement cm* 30
imballo / box dim. H97 x L47 x P61

pag. 141



133®



legno / faggio
wood / beech

peso / weight Kg 6,4
consumo stoffa cm* 46
fabric requirement cm* 46
imballo / box dim. H103 x L48 x P68

pag. 98

136®



legno / faggio
wood / beech

sedile stoffa / fabric seat Kg 6,5
sedile massello / wood seat Kg 6,9
consumo stoffa cm* 30
fabric requirement cm* 30
imballo / box dim. H103 x L48 x P68

pag. 99

141®



legno / faggio
wood / beech

peso / weight Kg 5,0
consumo stoffa cm* 30
fabric requirement cm* 30
imballo / box dim. H97 x L47 x P61

pag. 145

143®



legno / faggio
wood / beech

peso / weight Kg 5,0
consumo stoffa cm* 30
fabric requirement cm* 30
imballo / box dim. H97 x L47 x P61

pag. 145



146[®]

legno / faggio, frassino imp. rovere
wood / beech, ash, oak veneered

peso / weight Kg 6,3
consumo stoffa cm² 33
fabric requirement cm² 33
imballo / box dim. H97 x L47 x P61

pag. 146

147[®]

legno / faggio, frassino
wood / beech, ash

peso / weight Kg 5,6
consumo stoffa cm² 30
fabric requirement cm² 30
imballo / box dim. H97 x L47 x P61

pag. 189

148[®]

legno / faggio, frassino
wood / beech, ash

peso / weight Kg 4,8
consumo stoffa cm² 28
fabric requirement cm² 28
imballo / box dim. H97 x L46 x P55

pag. 189

150[®]

legno / faggio, rovere
wood / beech, oak

peso / weight Kg 5,9
consumo stoffa cm² 28
fabric requirement cm² 28
imballo / box dim. H100 x L47 x P67

pag. 150

276

150/P[®]

legno / faggio, rovere
wood / beech, oak

peso / weight Kg 8
consumo stoffa cm² 28
fabric requirement cm² 28
imballo / box dim. H100 x L47 x P67

pag. 150

152[®]

legno / faggio, rovere, noce canaletto
wood / beech, oak, american walnut

peso / weight Kg 6,5
consumo stoffa cm² 35
fabric requirement cm² 35
imballo / box dim. H100 x L50 x P63

pag. 112

152/1[®]

legno / faggio
wood / beech

peso / weight Kg 5,5
consumo stoffa cm² 35
fabric requirement cm² 35
imballo/box dim. H100 x L50 x P63

pag. 126

152/2[®]

legno / faggio
wood / beech

peso / weight Kg 6,0
consumo stoffa cm² 35
fabric requirement cm² 35
imballo/box dim. H100 x L50 x P63

pag. 126

152/3[®]

legno / faggio
wood / beech

peso/weight Kg 6,5
consumo stoffa cm² 55
fabric requirement cm² 55
imballo/box dim. H100 x L50 x P63

pag. 126

152/C[®]

legno / faggio
wood / beech

peso / weight Kg 6,0
consumo stoffa cm² 35
fabric requirement cm² 35
imballo / box dim. H100 x L50 x P63

pag. 116

152/F[®]

legno / faggio
wood / beech

peso/weight Kg 6,0
consumo stoffa cm² 35
fabric requirement cm² 35
imballo/box dim. H100 x L50 x P63

pag. 118

152/I[®]

legno / faggio
wood / beech

peso / weight Kg 6,0
consumo stoffa cm² 35
fabric requirement cm² 35
imballo / box dim. H100 x L50 x P63

pag. 108

152/L[®]

legno / faggio
wood / beech

peso / weight Kg 6,0
consumo stoffa cm² 35
fabric requirement cm² 35
imballo / box dim. H100 x L50 x P63

pag. 116

152/O[®]

legno / faggio
wood / beech

peso / weight Kg 6,0
consumo stoffa cm² 35
fabric requirement cm² 35
imballo / box dim. H100 x L50 x P63

pag. 108

152/R[®]

legno / faggio
wood / beech

peso / weight Kg 6,5
consumo stoffa cm² 35
fabric requirement cm² 35
imballo/box dim. H100 x L50 x P63

pag. 121

152/T[®]

legno / faggio
wood / beech

peso / weight Kg 6,0
consumo stoffa cm² 55
fabric requirement cm² 55
imballo / box dim. H100 x L50 x P63

pag. 108



277

153[®]

legno / faggio, frassino
wood / beech, ash

peso / weight Kg 6,0
consumo stoffa cm* 55
fabric requirement cm* 55
imballo / box dim. H98 x L45 x P70

pag. 196

153/S[®]

legno / faggio, frassino
wood / beech, ash

peso / weight Kg 7,5
consumo stoffa cm* 55
fabric requirement cm* 55
imballo / box dim. H112 x L47 x P56

pag. 196

157/BS[®]

base / faggio, frassino
base / beech, ash
scocca / multistrato faggio, frassino
body / plywood beech, ash
peso / weight Kg 5,5
imballo / box dim. H111 x L50 x P50

pag. 209

158[®]

base / faggio, frassino
base / beech, ash
scocca / multistrato faggio, frassino
body / plywood beech, ash
peso / weight Kg 4,5
imballo / box dim. H100 x L51 x P65

pag. 214

155[®]

legno / faggio, frassino
wood / beech, ash

peso / weight Kg 5,6
consumo stoffa cm* 30
fabric requirement cm* 30
imballo / box dim. H97 x L47 x P58

pag. 146

156[®]

base / faggio, frassino
base / beech, ash
scocca / multistrato faggio
body / plywood beech
peso / weight Kg 5,4
consumo stoffa cm* 65
fabric requirement cm* 65
imballo / box dim. H94 x L50 x P69

pag. 200

158/S[®]

base / faggio, frassino
base / beech, ash
scocca / multistrato faggio, frassino
body / plywood beech, ash
peso / weight Kg 5,5
imballo / box dim. H111 x L48 x P53

pag. 214

158/B[®]

base / faggio, frassino
base / beech, ash
scocca / multistrato faggio, frassino
body / plywood beech, ash
peso / weight Kg 4,5
imballo / box dim. H100 x L51 x P65

pag. 215

278

156/B[®]

base / faggio, frassino
base / beech, ash
scocca / multistrato faggio
body / plywood beech
peso / weight Kg 5,4
consumo stoffa cm* 65
fabric requirement cm* 65
imballo / box dim. H94 x L50 x P69

pag. 200

157[®]

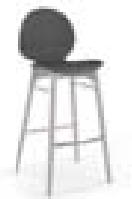
base / faggio, frassino
base / beech, ash
scocca / multistrato faggio, frassino
body / plywood beech, ash
peso / weight Kg 5
imballo / box dim. H100 x L51 x P62

pag. 208

158/BS[®]

base / faggio, frassino
base / beech, ash
scocca / multistrato faggio, frassino
body / plywood beech, ash
peso / weight Kg 5,5
imballo / box dim. H111 x L48 x P53

pag. 215

157/S[®]

base / faggio, frassino
base / beech, ash
scocca / multistrato faggio, frassino
body / plywood beech, ash
peso / weight Kg 5,5
imballo / box dim. H111 x L50 x P50

pag. 208

157/B[®]

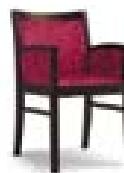
base / faggio, frassino
base / beech, ash
scocca / multistrato faggio, frassino
body / plywood beech, ash
peso / weight Kg 5
imballo / box dim. H100 x L51 x P62

pag. 209

160[®]

legno / faggio
wood / beech
peso / weight Kg 6,3
consumo stoffa cm* 30
fabric requirement cm* 30
imballo / box dim. H107 x L51 x P71

pag. 152

171/PSL[®]

legno / faggio
wood / beech
peso / weight Kg 9,8
consumo stoffa cm* 115
fabric requirement cm* 115
imballo / box dim. H89 x L52 x P59

pag. 155

279

172®



legno / faggio
wood / beech

peso / weight Kg 8,0
consumo stoffa cm* 75
fabric requirement cm* 75
imballo / box dim. H107 x L51 x P71

pag. 156

172/P®



legno / faggio
wood / beech

peso / weight Kg 9,5
consumo stoffa cm* 75
fabric requirement cm* 75
imballo / box dim. H89 x L52 x P59

pag. 156

180/POUF®



legno / faggio
wood / beech

peso / weight Kg 4,5
consumo stoffa cm* 65
fabric requirement cm* 65
imballo/box dim. H83 x L55 x P55

pag. 171



180/S®



legno / faggio
wood / beech

peso / weight Kg 6,2
consumo stoffa cm* 52
fabric requirement cm* 52
imballo/box dim. H108 x L46 x P54

pag. 171

174®



legno / faggio
wood / beech

peso / weight Kg 7,9
consumo stoffa cm* 35
fabric requirement cm* 35
imballo / box dim. H107 x L51 x P71

pag. 157



174/P®



legno / faggio
wood / beech

peso / weight Kg 9,4
consumo stoffa cm* 35
fabric requirement cm* 35
imballo / box dim. H89 x L52 x P59

pag. 157



181®



legno / faggio
wood / beech

peso / weight Kg 5,8
consumo stoffa cm* 30
fabric requirement cm* 30
imballo/box dim. H98 x L49 x P68

pag. 179



181/P®



legno / faggio
wood / beech

peso / weight Kg 8,0
consumo stoffa cm* 35
fabric requirement cm* 35
imballo/box dim. H86 x L64 x P57

pag. 179

280

180®



legno / faggio
wood / beech

peso / weight Kg 5,8
consumo stoffa cm* 55
fabric requirement cm* 55
imballo / box dim. H98 x L49 x P68

pag. 162

180/P®



legno / faggio
wood / beech

peso / weight Kg 7,5
consumo stoffa cm* 65
fabric requirement cm* 65
imballo/box dim. H86 x L64 x P57

pag. 162

182®



legno / faggio
wood / beech

peso / weight Kg 5,8
consumo stoffa cm* 30
fabric requirement cm* 30
imballo/box dim. H98 x L49 x P68

pag. 180



185®



legno / faggio
wood / beech

peso / weight Kg 5,8
consumo stoffa cm* 30
fabric requirement cm* 30
imballo / box dim. H98 x L49 x P68

pag. 180



281

180/IM®



legno / faggio
wood / beech

peso / weight Kg 6,5
consumo stoffa cm* 105
fabric requirement cm* 105
imballo/box dim. H97 x L55 x P64

pag. 168



180/PIM®



legno / faggio
wood / beech

peso / weight Kg 7,5
consumo stoffa cm* 105
fabric requirement cm* 105
imballo/box dim. H97 x L64 x P64

pag. 168



197®



legno / faggio
wood / beech

peso / weight Kg 5,8
consumo stoffa cm* 30
fabric requirement cm* 30
imballo / box dim. H98 x L49 x P68

pag. 180



384[®]

legno / faggio
wood / beech
sedile stoffa/fabric seat Kg 5,3
sedile massello/wood seat Kg 6,0
sedile paglia/straw seat Kg 5,3
consumo stoffa cm* 30
fabric requirement cm* 30
imballo / box dim. H97 x L47 x P58

pag. 192

389[®]

legno / faggio
wood / beech
sedile stoffa / fabric seat Kg 5,6
sedile massello / wood seat Kg 6,3
sedile paglia / straw seat Kg 5,6
consumo stoffa cm* 30
fabric requirement cm* 30
imballo / box dim. H97 x L46 x P55

pag. 192

1122[®]

legno / faggio, frassino
wood / beech, ash

peso / weight Kg 6,0
consumo stoffa cm* 90
fabric requirement cm* 90
imballo / box dim. H97 x L49 x P71

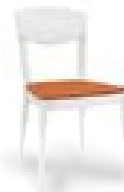
pag. 184

1122/P[®]

legno / faggio, frassino
wood / beech, ash

peso / weight Kg 7,5
consumo stoffa cm* 110
fabric requirement cm* 110
imballo / box dim. H91 x L61 x P61

pag. 184

400[®]

legno / faggio
wood / beech
sedile stoffa / fabric seat Kg 4,5
sedile multistrato / plywood seat Kg 4,5
cuoio rigen. / regen. leather Kg 4,5
consumo stoffa cm* 30
fabric requirement cm* 30
imballo/box dim. H95 x L48 x P60

pag. 146

404[®]

legno / faggio
wood / beech
sedile stoffa / fabric seat Kg 5,5
sedile massello / wood seat Kg 6,2
sedile paglia / straw seat Kg 5,5
consumo stoffa cm* 30
fabric requirement cm* 30
imballo / box dim. H97 x L47 x P58

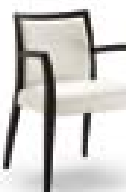
pag. 191

1205[®]

legno / faggio
wood / beech

peso / weight Kg 6,3
consumo stoffa cm* 90
fabric requirement cm* 90
imballo / box dim. H92 x L51 x P63

pag. 18

1205/P[®]

legno / faggio
wood / beech

peso / weight Kg 7,0
consumo stoffa cm* 105
fabric requirement cm* 105
imballo / box dim. H83 x L63 x P63

pag. 19

282

1000[®]

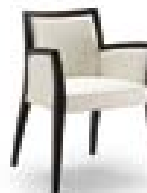
legno / faggio, rovere, noce canaletto
wood / beech, oak, american walnut
peso / weight
faggio / beech Kg 5,5
rovere / oak Kg 5,7
noce canaletto / american walnut Kg 5,0
consumo stoffa cm* 50
fabric requirement cm* 50
imballo / box dim. H92 x L49 x P58

pag. 132

1000/P[®]

legno / faggio, rovere, noce canaletto
wood / beech, oak, american walnut
peso / weight
faggio / beech Kg 7,0
rovere / oak Kg 7,5
noce canaletto / american walnut Kg 6,5
consumo stoffa cm* 60
fabric requirement cm* 60
imballo / box dim. H83 x L58 x P58

pag. 132

1205/PSL[®]

legno / faggio
wood / beech

peso / weight Kg 8,5
consumo stoffa cm* 160
fabric requirement cm* 160
imballo / box dim. H83 x L63 x P63

pag. 19

1210/P[®]

legno / faggio
wood / beech

peso / weight Kg 7,5
consumo stoffa cm* 160
fabric requirement cm* 160
imballo / box dim. H78 x L70 x P60

pag. 24

1000/S[®]

legno / faggio, rovere, noce canaletto
wood / beech, oak, american walnut
peso / weight
faggio / beech Kg 7,0
rovere / oak Kg 7,5
noce canaletto / american walnut Kg 6,5
consumo stoffa cm* 40
fabric requirement cm* 40
imballo / box dim. H109 x L45 x P47

pag. 137

1122/S[®]

legno / faggio, frassino
wood / beech, ash

peso / weight Kg 6,5
consumo stoffa cm* 80
fabric requirement cm* 80
imballo / box dim. H108 x L49 x P54

pag. 185

1215/P[®]

legno / faggio
wood / beech

peso / weight Kg 7,7
consumo stoffa cm* 145
fabric requirement cm* 145
imballo / box dim. H77 x L61 x P61

pag. 29

283

1220®



legno / faggio
wood / beech

peso / weight Kg 8,3
consumo stoffa cm* 130
fabric requirement cm* 130
imballo / box dim. H96 x L52 x P74

pag. 32

1220/P®



legno / wood
faggio / beech

peso / weight Kg 10,3
consumo stoffa cm* 140
fabric requirement cm* 140
imballo / box dim. H82 x L68 x P62

pag. 32

1245®



legno / faggio
wood / beech

peso / weight Kg 6,3
consumo stoffa cm* 90
fabric requirement cm* 90
imballo / box dim. H96 x L52 x P74

pag. 54

1245/P®



legno / faggio
wood / beech

peso / weight Kg 7,5
consumo stoffa cm* 90
fabric requirement cm* 90
imballo / box dim. H85 x L61 x P61

pag. 54

1225/P®



legno / faggio
wood / beech

peso / weight Kg 9,5
consumo stoffa cm* 175
fabric requirement cm* 175
imballo / box dim. H83 x L63 x P63

pag. 37

1230/P®



legno / faggio
wood / beech

peso / weight Kg 9,3
sedile stoffa / fabric seat
consumo stoffa cm* 160
fabric requirement cm* 160
imballo / box dim. H78 x L70 x P60

pag. 40

1250/P®



legno / faggio
wood / beech

peso / weight Kg 15,0
consumo stoffa cm* 230
fabric requirement cm* 230
imballo / box dim. H94 x L76 x P76
pezzi / packing 1 per box

pag. 59

284

1235/P®



legno / faggio
wood / beech

peso / weight Kg 8,5
consumo stoffa cm* 110
fabric requirement cm* 110
imballo / box dim. H83 x L63 x P63

pag. 46

1235/PSL®



legno / faggio
wood / beech

peso / weight Kg 9,8
consumo stoffa cm* 170
fabric requirement cm* 170
imballo / box dim. H83 x L63 x P63

pag. 46

1240/P®



legno / faggio
wood / beech

peso / weight Kg 8,7
consumo stoffa cm* 110
fabric requirement cm* 110
imballo / box dim. H82 x L68 x P62

pag. 51

1240/PSL®



legno / faggio
wood / beech

peso / weight Kg 10,0
consumo stoffa cm* 160
fabric requirement cm* 160
imballo / box dim. H82 x L68 x P62

pag. 51

1510 B01G/GR®



scocca / poliuretano schiumato
body / polyurethane foam
base / ferro
base / iron
peso / weight Kg 23
consumo stoffa cm* 200
fabric requirement cm* 200
imballo / box dim. H80 x L73 x P67

pag. 256

1510 B02G/GR®



scocca / poliuretano schiumato
body / polyurethane foam
base / ferro
base / iron
peso / weight Kg 15
consumo stoffa cm* 200
fabric requirement cm* 200
imballo / box dim. H80 x L73 x P67

pag. 256

1510 B11F®



scocca / poliuretano schiumato
body / polyurethane foam
base / ferro
base / iron
peso / weight Kg 12
consumo stoffa cm* 200
fabric requirement cm* 200
imballo / box dim. H80 x L73 x P67

pag. 252

1510 B12G®



scocca / poliuretano schiumato
body / polyurethane foam
base / ferro
base / iron
peso / weight Kg 12
consumo stoffa cm* 200
fabric requirement cm* 200
imballo / box dim. H80 x L73 x P67

pag. 255

285

1510 B13G/GR®



scocca / poliuretano schiumato
body / polyurethane foam
base / ferro
base / iron
peso / weight Kg 14
consumo stoffa cm* 200
fabric requirement cm* 200
imballo / box dim. H80 x L73 x P67

pag. 255

1520 B01G/GR®



scocca / poliuretano schiumato
body / polyurethane foam
base / ferro
base / iron
peso / weight Kg 26
consumo stoffa cm* 260
fabric requirement cm* 260
imballo / box dim. H88 x L79 x P69

pag. 260

1540 B12G®



scocca / poliuretano schiumato
body / polyurethane foam
base / ferro
base / iron
peso / weight Kg 13
consumo stoffa cm* 140
fabric requirement cm* 140
imballo / box dim. H91 x L70 x P63

pag. 248

1540 B13G/GR®



scocca / poliuretano schiumato
body / polyurethane foam
base / ferro
base / iron
peso / weight Kg 15
consumo stoffa cm* 140
fabric requirement cm* 140
imballo / box dim. H91 x L70 x P63

pag. 248

1520 B02G/GR®



scocca / poliuretano schiumato
body / polyurethane foam
base / ferro
base / iron
peso / weight Kg 18
consumo stoffa cm* 260
fabric requirement cm* 260
imballo / box dim. H88 x L79 x P69

pag. 260

1520 B35G®



scocca / poliuretano schiumato
body / polyurethane foam
base / ferro
base / iron
peso / weight Kg 16
consumo stoffa cm* 260
fabric requirement cm* 260
imballo / box dim. H88 x L79 x P69

pag. 261

1540 B14G®



scocca / poliuretano schiumato
body / polyurethane foam
base / ferro
base / iron
peso / weight Kg 14
consumo stoffa cm* 140
fabric requirement cm* 140
imballo / box dim. H91 x L70 x P63

pag. 251

1540 B51F®



scocca / poliuretano schiumato
body / polyurethane foam
base / ferro
base / iron
peso / weight Kg 14
consumo stoffa cm* 140
fabric requirement cm* 140
imballo / box dim. H91 x L70 x P63

pag. 249

286

1530 B01G/GR®



scocca / poliuretano schiumato
body / polyurethane foam
base / ferro
base / iron
peso / weight Kg 30
consumo stoffa cm* 235
fabric requirement cm* 235
imballo / box dim. H88 x L79 x P69

pag. 265

1530 B08F®



scocca / poliuretano schiumato
body / polyurethane foam
base / ferro
base / iron
peso / weight Kg 15
consumo stoffa cm* 235
fabric requirement cm* 235
imballo / box dim. H88 x L79 x P69

pag. 265

1540 B92F®



scocca / poliuretano schiumato
body / polyurethane foam
base / ferro, legno faggio
base / iron, beech wood
peso / weight Kg 13
consumo stoffa cm* 140
fabric requirement cm* 140
imballo / box dim. H91 x L70 x P63

pag. 251

1550 B01G/GR®



scocca / poliuretano schiumato
body / polyurethane foam
base / ferro
base / iron
peso / weight Kg 26
consumo stoffa cm* 255
fabric requirement cm* 255
imballo / box dim. H93 x L93 x P77

pag. 244

1540 B01G/GR®



scocca / poliuretano schiumato
body / polyurethane foam
base / ferro
base / iron
peso / weight Kg 24
consumo stoffa cm* 140
fabric requirement cm* 140
imballo / box dim. H91 x L70 x P63

pag. 251

1540 B11F®



scocca / poliuretano schiumato
body / polyurethane foam
base / ferro
base / iron
peso / weight Kg 13
consumo stoffa cm* 140
fabric requirement cm* 140
imballo / box dim. H91 x L70 x P63

pag. 248

1550 B02G/GR®



scocca / poliuretano schiumato
body / polyurethane foam
base / ferro
base / iron
peso / weight Kg 18
consumo stoffa cm* 255
fabric requirement cm* 255
imballo / box dim. H93 x L93 x P77

pag. 242

1550 B13G/GR®



scocca / poliuretano schiumato
body / polyurethane foam
base / ferro
base / iron
peso / weight Kg 17
consumo stoffa cm* 255
fabric requirement cm* 255
imballo / box dim. H93 x L93 x P77

pag. 243

287

1551 B01G/GR® **scocca** / poliuretano schiumato
body / polyurethane foam
base / ferro
base / iron
peso / weight Kg 26
consumo stoffa cm* 265
fabric requirement cm* 265
imballo / box dim. H103 x L93 x P77



pag. 244

1551 B02G/GR® **scocca** / poliuretano schiumato
body / polyurethane foam
base / ferro
base / iron
peso / weight Kg 18
consumo stoffa cm* 265
fabric requirement cm* 265
imballo / box dim. H103 x L93 x P77



pag. 242

1551 B13G/GR® **scocca** / poliuretano schiumato
body / polyurethane foam
base / ferro
base / iron
peso / weight Kg 17
consumo stoffa cm* 265
fabric requirement cm* 265
imballo / box dim. H103 x L93 x P77



pag. 243

1560 B01G/GR® **scocca** / poliuretano schiumato
body / polyurethane foam
base / ferro
base / iron
peso / weight Kg 23
consumo stoffa cm* 140
fabric requirement cm* 140
imballo / box dim. H91 x L70 x P63



pag. 234

1560 B02G/GR® **scocca** / poliuretano schiumato
body / polyurethane foam
base / ferro
base / iron
peso / weight Kg 15
consumo stoffa cm* 140
fabric requirement cm* 140
imballo / box dim. H91 x L70 x P63



pag. 236

1560 B11F® **scocca** / poliuretano schiumato
body / polyurethane foam
base / ferro
base / iron
peso / weight Kg 12
consumo stoffa cm* 140
fabric requirement cm* 140
imballo / box dim. H91 x L70 x P63



pag. 235

1560 B12G® **scocca** / poliuretano schiumato
body / polyurethane foam
base / ferro
base / iron
peso / weight Kg 12
consumo stoffa cm* 140
fabric requirement cm* 140
imballo / box dim. H91 x L70 x P63



pag. 235

1560 B13G/GR® **scocca** / poliuretano schiumato
body / polyurethane foam
base / ferro
base / iron
peso / weight Kg 14
consumo stoffa cm* 140
fabric requirement cm* 140
imballo / box dim. H91 x L70 x P63



pag. 235

1560 B21F® **scocca** / poliuretano schiumato
body / polyurethane foam
base / ferro
base / iron
peso / weight Kg 12
consumo stoffa cm* 140
fabric requirement cm* 140
imballo / box dim. H91 x L70 x P63



pag. 236

1560 B22F® **scocca** / poliuretano schiumato
body / polyurethane foam
base / ferro
base / iron
peso / weight Kg 13
consumo stoffa cm* 140
fabric requirement cm* 140
imballo / box dim. H91 x L70 x P63



pag. 239

1560 B23F® **scocca** / poliuretano schiumato
body / polyurethane foam
base / ferro
base / iron
peso / weight Kg 13
consumo stoffa cm* 140
fabric requirement cm* 140
imballo / box dim. H91 x L70 x P63



pag. 238

1560 B81F® **scocca** / poliuretano schiumato
body / polyurethane foam
base / legno faggio
base / wood beech
peso / weight Kg 12
consumo stoffa cm* 140
fabric requirement cm* 140
imballo / box dim. H91 x L70 x P63



pag. 238

1560 B92F® **scocca** / poliuretano schiumato
body / polyurethane foam
base / ferro, legno faggio
base / iron, beech wood
peso / weight Kg 12
consumo stoffa cm* 140
fabric requirement cm* 140
imballo / box dim. H91 x L70 x P63



pag. 239

1570 B01G/GR® **scocca** / poliuretano schiumato
body / polyurethane foam
base / ferro
base / iron
peso / weight Kg 24
consumo stoffa cm* 210
fabric requirement cm* 210
imballo / box dim. H91 x L70 x P63



pag. 221

1570 B11F® **scocca** / poliuretano schiumato
body / polyurethane foam
base / ferro
base / iron
peso / weight Kg 13
consumo stoffa cm* 210
fabric requirement cm* 210
imballo / box dim. H91 x L70 x P63



pag. 220

1570 B12G® **scocca** / poliuretano schiumato
body / polyurethane foam
base / ferro
base / iron
peso / weight Kg 13
consumo stoffa cm* 210
fabric requirement cm* 210
imballo / box dim. H91 x L70 x P63



pag. 220

1570 B13G/GR®



scocca / poliuretano schiumato
body / polyurethane foam
base / ferro
base / iron
peso / weight Kg 15
consumo stoffa cm* 210
fabric requirement cm* 210
imballo / box dim. H91 x L70 x P63

pag. 221

1570 B21F®



scocca / poliuretano schiumato
body / polyurethane foam
base / ferro
base / iron
peso / weight Kg 13
consumo stoffa cm* 210
fabric requirement cm* 210
imballo / box dim. H91 x L70 x P63

pag. 224

1580 B12G®



scocca / poliuretano schiumato
body / polyurethane foam
base / ferro
base / iron
peso / weight Kg 15
consumo stoffa cm* 170
fabric requirement cm* 170
imballo / box dim. H90 x L65 x P61

pag. 229

1580 B13G/GR®



scocca / poliuretano schiumato
body / polyurethane foam
base / ferro
base / iron
peso / weight Kg 17
consumo stoffa cm* 170
fabric requirement cm* 170
imballo / box dim. H90 x L65 x P61

pag. 229

1570 B22F®



scocca / poliuretano schiumato
body / polyurethane foam
base / ferro
base / iron
peso / weight Kg 14
consumo stoffa cm* 210
fabric requirement cm* 210
imballo / box dim. H91 x L70 x P63

pag. 225

1570 B23F®



scocca / poliuretano schiumato
body / polyurethane foam
base / ferro
base / iron
peso / weight Kg 14
consumo stoffa cm* 210
fabric requirement cm* 210
imballo / box dim. H91 x L70 x P63

pag. 223

1580 B14G®



scocca / poliuretano schiumato
body / polyurethane foam
base / ferro
base / iron
peso / weight Kg 16
consumo stoffa cm* 170
fabric requirement cm* 170
imballo / box dim. H90 x L65 x P61

pag. 231

1580 B91F®



scocca / poliuretano schiumato
body / polyurethane foam
base / legno faggio, noce canaletto
base / wood beech, walnut
peso / weight Kg 12
consumo stoffa cm* 170
fabric requirement cm* 170
imballo / box dim. H90 x L65 x P61

pag. 227

290

1570 B81F®



scocca / poliuretano schiumato
body / polyurethane foam
base / legno faggio
base / wood beech
peso / weight Kg 13
consumo stoffa cm* 210
fabric requirement cm* 210
imballo / box dim. H91 x L70 x P63

pag. 225

1570 B92F®



scocca / poliuretano schiumato
body / polyurethane foam
base / legno faggio
base / wood beech
peso / weight Kg 13
consumo stoffa cm* 210
fabric requirement cm* 210
imballo / box dim. H91 x L70 x P63

pag. 223

1180®



legno / wood
faggio / beech

peso / weight Kg 17,0
consumo stoffa cm* 350
fabric requirement cm* 350
imballo / box dim. H86 x L71 x P74

pag. 175

2180®



legno / wood
faggio / beech

peso / weight Kg 28,0
consumo stoffa cm* 450
fabric requirement cm* 450
imballo / box dim. H86 x L132 x P74

pag. 174

291

1580 B01G/GR®



scocca / poliuretano schiumato
body / polyurethane foam
base / ferro
base / iron
peso / weight Kg 26
consumo stoffa cm* 170
fabric requirement cm* 170
imballo / box dim. H90 x L65 x P61

pag. 231

1580 B11F®



scocca / poliuretano schiumato
body / polyurethane foam
base / ferro
base / iron
peso / weight Kg 15
consumo stoffa cm* 170
fabric requirement cm* 170
imballo / box dim. H90 x L65 x P61

pag. 229

2510 B33F®



scocca / poliuretano schiumato
body / polyurethane foam
base / ferro
base / iron
peso / weight Kg 21
consumo stoffa cm* 420
fabric requirement cm* 420
imballo / box dim. H89 x L145 x P70

pag. 263

FINITURE E RIVESTIMENTI
FABRICS AND FINISHINGS



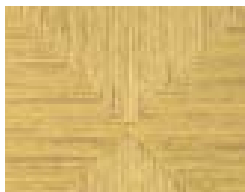
Finiture e rivestimenti / Fabrics and finishings

I colori dei legni e dei rivestimenti presenti su questo catalogo, sono puramente indicativi e non sono da intendersi fedeli alla reale tonalità per inevitabili limiti di riproduzione. Ci riserviamo la facoltà di variare, in qualsiasi momento, questa gamma senza nessun preavviso.

The colours of wood types and fabrics in this catalogue are purely an example and are not to be considered true to the real colours due to the inevitable limitations of reproduction. We reserve the right to make changes to this range at any time without prior notice.

294

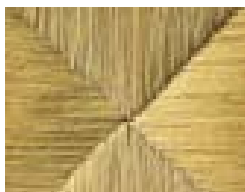
Sedili in paglia / Straw seats



Mais antico

SEDUTE IN CARTA INTRECCIATA DISPONIBILI A RICHIESTA PER I MODELLI:
"PAPER" SEATS AVAILABLE ON DEMAND FOR MODELS:

101 - 103 - 104 - 107 - 108 - 109 - 110 - 112 - 116 - 118 - 120 - 123 - 147
155 - 384 - 389 - 404



Paglia di segala

SEDUTE IN PAGLIA DI SEGALA DISPONIBILI PER I MODELLI:
RYE STRAW SEAT AVAILABLE FOR MODELS:

148 - 384

Finiture legno / Wood finishings



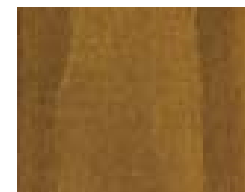
Faggio tinto naturale



Faggio tinto ciliegio



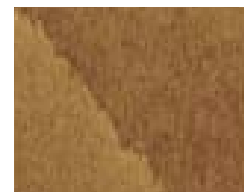
Faggio tinto ciliegio scuro



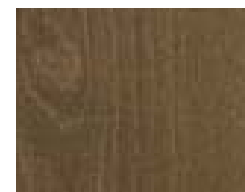
Faggio tinto ciliegio francia



Faggio tinto rovere chiaro



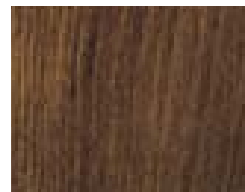
Faggio tinto noce chiaro



Faggio tinto noce canaletto



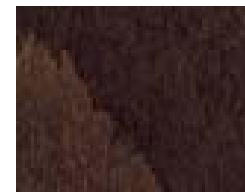
Faggio tinto noce nazionale



Faggio tinto noce anticato
lavorazione manuale



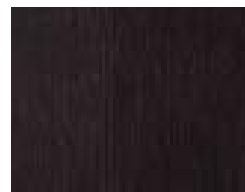
Faggio tinto noce standard



Faggio tinto noce 122



Faggio tinto caffè



Faggio tinto wengè

295

Rivestimenti - Cat. 1 / Fabrics - Cat. 1



Panama Ecrù



Panama Salmone 390



Panama Blu 388



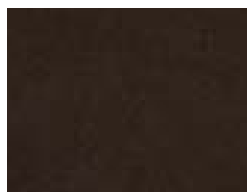
Reginarca Beige 411



Reginarca verde salvia 802



Reginarca Bordeaux 300



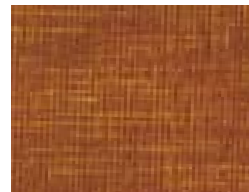
Reginarca testa di moro 405

296

Rivestimenti - Cat. 2 / Fabrics - Cat. 2



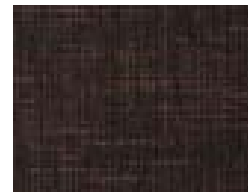
Utah 1 Beige 100



Utah 1 Arancio 301



Utah 1 Rosso 300



Utah 1 Marrone 404



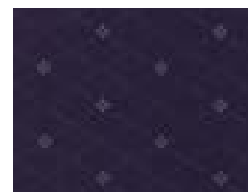
Dama Beige 02



Dama Giallo 10

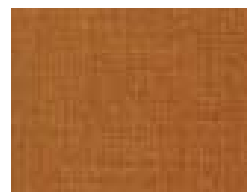


Dama Bordeaux 01



Dama Blu 60

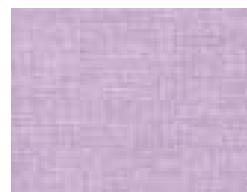
297



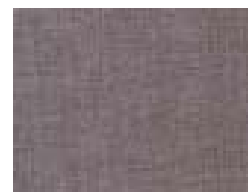
Lilium Water Resist Arancio 301



Lilium Water Resist Rosso 305



Lilium Water Resist Lilla 001



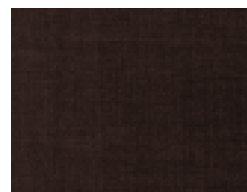
Lilium Water Resist Grigio 005



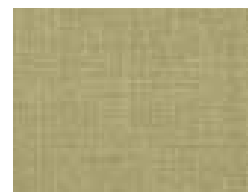
Lilium Water Resist Beige 100



Lilium Water Resist Sabbia 401



Lilium Water Resist Marrone 405

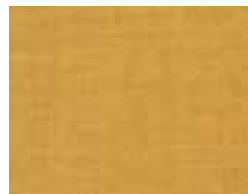


Lilium Water Resist Verde 804

Rivestimenti - Cat. 3 / Fabrics - Cat. 3



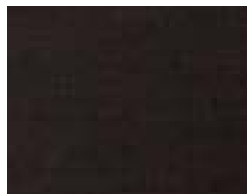
Birba Nano Tecno Beige 102



Birba Nano Tecno Giallo 106



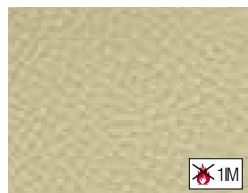
Birba Nano Tecno Rosso 109



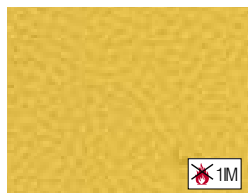
Birba Nano Tecno Marrone 104



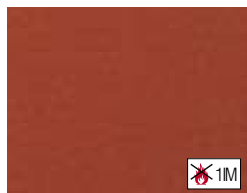
Inca Ecopelle Bianco 1



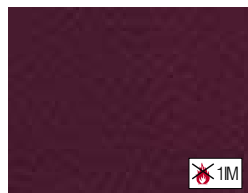
Inca Ecopelle Grigio 2



Inca Ecopelle Giallo 12



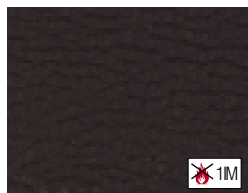
Inca Ecopelle Mattone 15



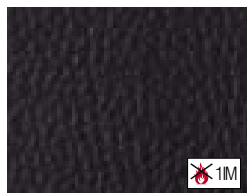
Inca Ecopelle Bordeaux 19



Inca Ecopelle Blu 35



Inca Ecopelle Marrone scuro 11



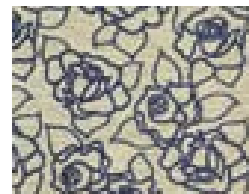
Inca Ecopelle Nero 42

298

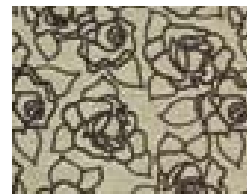
Rivestimenti - Cat. 6 / Fabrics - Cat. 6



Lake 1 - 4163 Bianco 100



Lake 1 - 4163 Blu 700



Lake 1 - 4163 Marrone 400



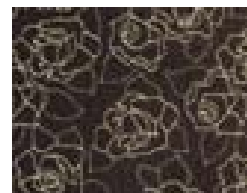
Lake 1 - 4163 Nero 200



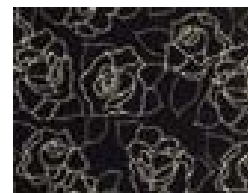
Lake 2 - 4163 Bianco 100



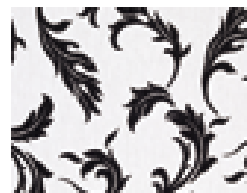
Lake 2 - 4163 Blu 700



Lake 2 - 4163 Marrone 400



Lake 2 - 4163 Nero 200



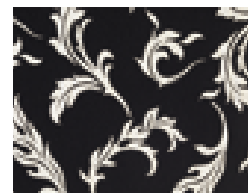
Pensiero 8844 Bianco 100



Pensiero 8844 Beige 400



Pensiero 8844 Bordeaux 300



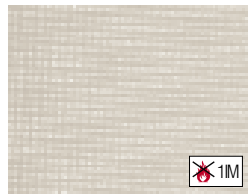
Pensiero 8844 Nero 200

299

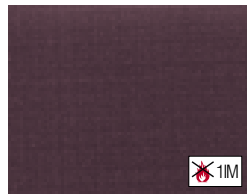
Rivestimenti - Cat. 7 / Fabrics - Cat. 7



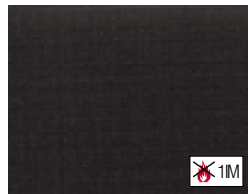
Aurea Silk Bianco 51



Aurea Silk Beige 50



Aurea Silk Viola 54

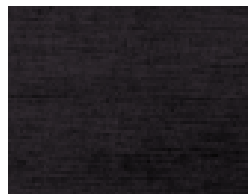


Aurea Silk Antracite 62

Rivestimenti - Cat. 8 / Fabrics - Cat. 8



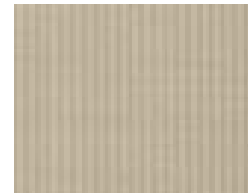
Optika Plain Beige 111



Optika Plain Nero 100



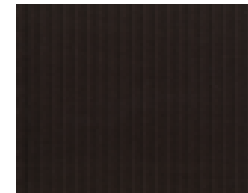
Rivestimenti - Cat. 9 / Fabrics - Cat. 9



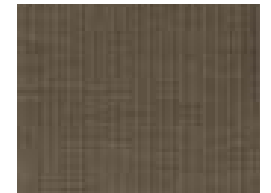
Dandy 12 Beige 1202



Dandy 12 Senape 1203



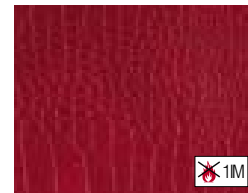
Dandy 12 Marrone 1205



Dandy 12 Verde canna 1208



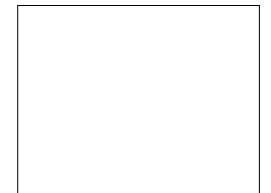
Eco Leather Coco Bianco 1



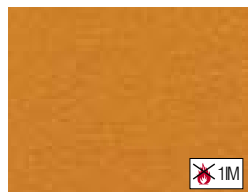
Eco Leather Coco Rosso 6



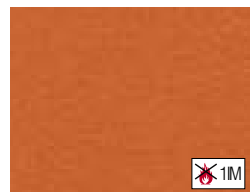
Eco Leather Coco Marrone 7



Rivestimenti - Cat. 10 / Fabrics - Cat. 10



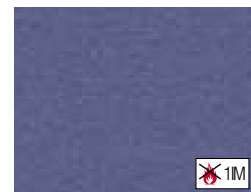
Blazer 1 Giallo mandarino Cuz 50



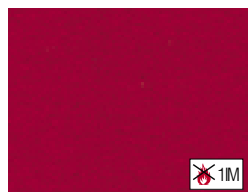
Blazer 1 Arancio Cuz 01



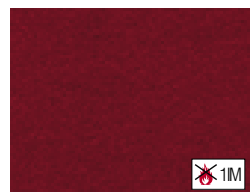
Blazer 1 Verde Acido Cuz 23



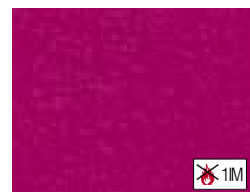
Blazer 1 Blu Colomba Cuz 40



Blazer 1 Rosso Fuoco Cuz 18



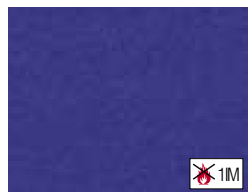
Blazer 1 Rosso Corallo Cuz 13



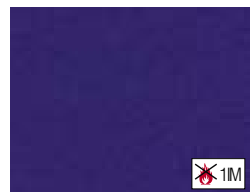
Blazer 1 Fucsia Cuz 16



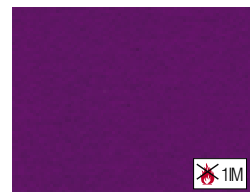
Blazer 1 Porpora Cuz 45



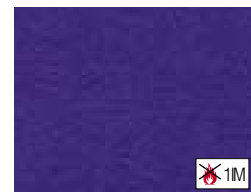
Blazer 1 Blu Capri Cuz 24



Blazer 1 Blu Scuro Cuz 06



Blazer 1 Viola Cuz 46



Blazer 1 Indaco Cuz 37

302

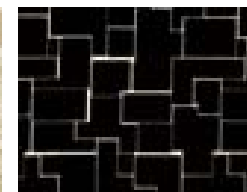
Rivestimenti - Cat. 11 / Fabrics - Cat. 11



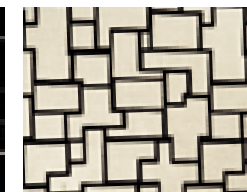
Optika Design 311/A



Optika Design 311/B



Optika Design 400/A



Optika Design 400/B

303

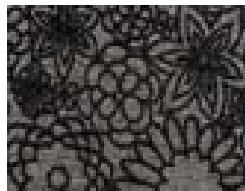
Rivestimenti - Cat. 12 / Fabrics - Cat. 12



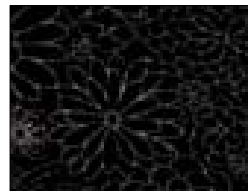
Steel Lace 2/A



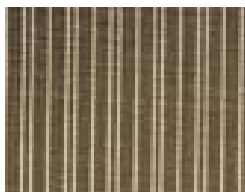
Steel Lace 2/B



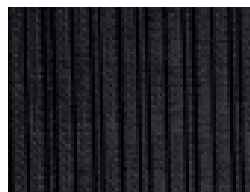
Steel Lace 6/A



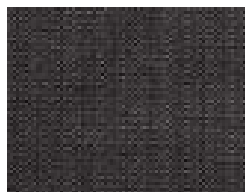
Steel Lace 6/B



Steel Line 2



Steel Line 6

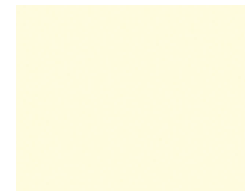


Steel Plain 6

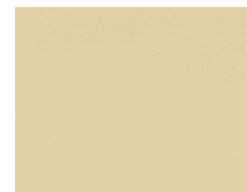


Cuoio rigenerato ingrassato / Regenerated leather

DISPONIBILE SOLO PER I MODELLI:
AVAILABLE ONLY FOR MODELS:
140 - 141 - 142 - 143 - 146 - 150 - 155



Cuoio Avorio



Cuoio Naturale



Cuoio Rosso



Cuoio Testa di moro



Cuoio Nero

Twenty